

MILANO

CORSO  
VITTORIO  
EMANUELE

MILANO

CORSO  
VITTORIO  
EMANUELE

A UNIQUE  
SHOPPING  
EXPERIENCE IN  
THE REAL  
HEART OF  
THE CITY

MILANO



YOUR BRAND

MILANO

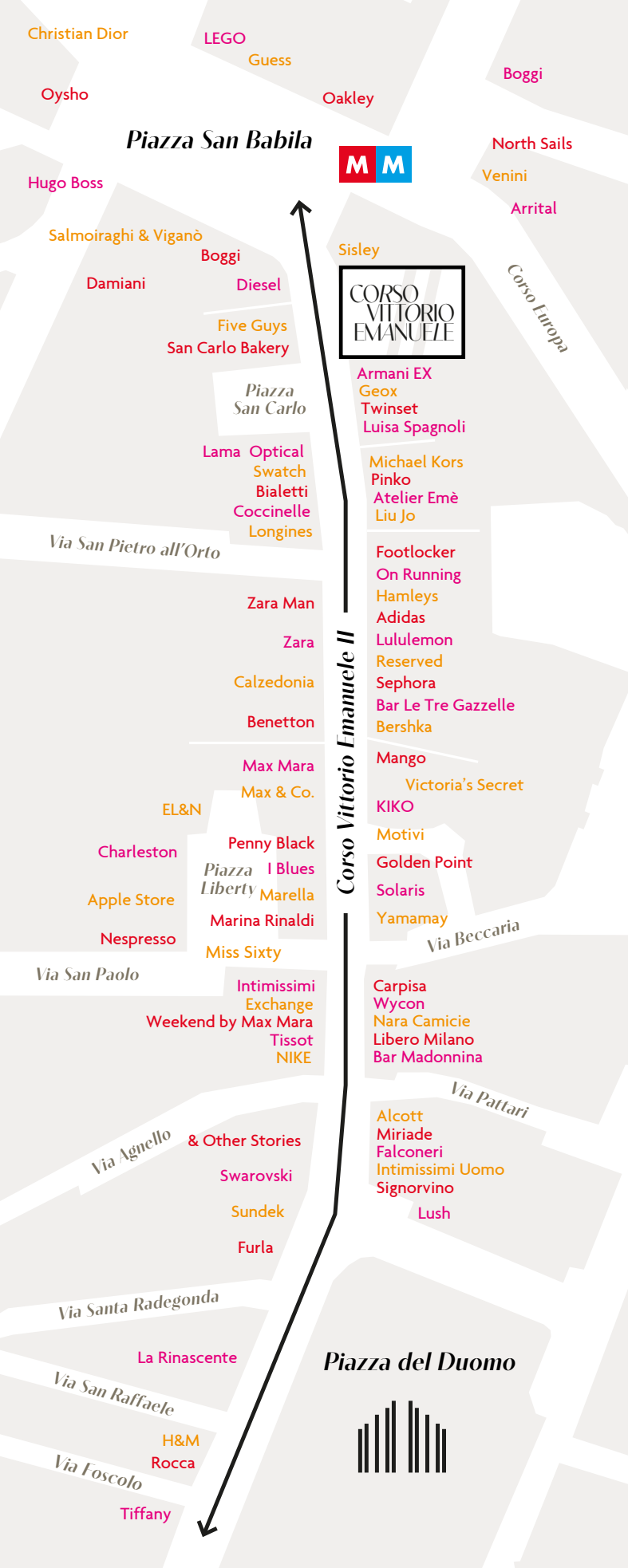




Nestled in one of the world's most sought-after shopping districts, positioned on Corso Vittorio Emanuele II and few steps from Piazza San Babila, Galleria Passarella 1 encompasses four floors dedicated to retail and one to storage, for a total of approximately 1,965 square meters.

A unique retail space with a distinct charm and unparalleled visibility. Its bright, expansive corner windows, each over 20 meters in length, further enhance the space with natural light

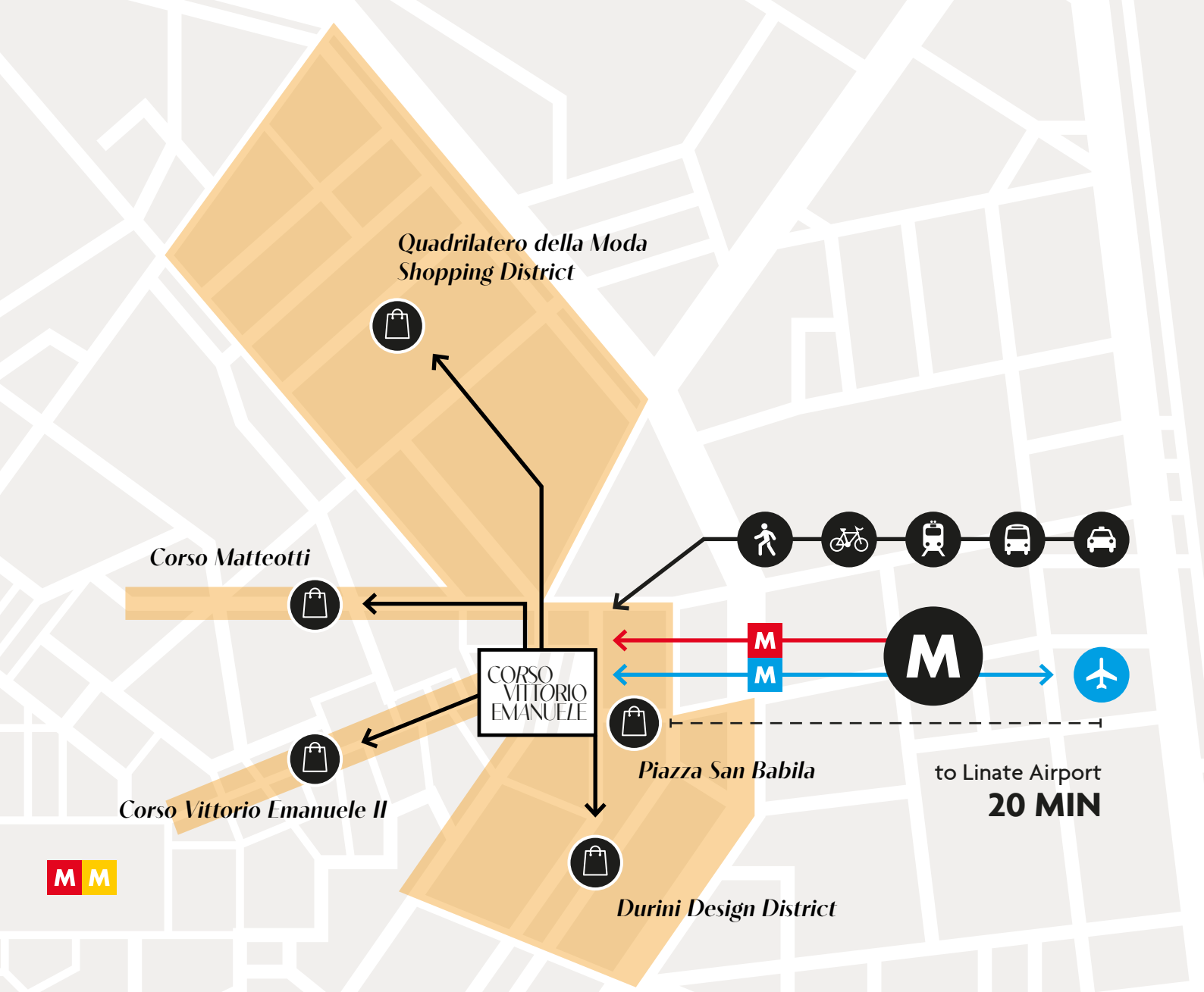
# CORSO VITTORIO EMANUELE



Galleria Passarella 1 is situated in the vibrant heart of Milan, a stone's throw away from cultural gems like the Duomo Cathedral, Palazzo Reale, and the Gallery, and within easy reach of the prestigious "Quadrilatero della Moda." Corso Vittorio Emanuele II reigns as a global shopping mecca, drawing millions of visitors daily.

Its strategic position provides seamless access to underground and surface transportation networks, along with a diverse range of services in the immediate vicinity, and the newly established MM4 subway connection ensures a swift 20-minute journey to Linate Airport.






### Distances

**M** **1 MIN:** M1/M4 San Babila  
**5 MIN:** M1/M3 Duomo

 **7 MIN:** Cadorna FN  
**10 MIN:** Centrale FS

 **20 MIN:** Linate Airport  
**50 MIN:** Malpensa Airport



**BUS LINES**  
 54 - 60  
 61 - 84



**TAXI STATIONS**  
 Piazza San Babila  
 Piazza Duomo



**BIKE STATIONS**  
 S. Babila - S. Pietro all'Orto  
 Via Borgogna - Piazza Meda



**CAR SHARING**  
 C.so Venezia - C.so Monforte  
 Via Hoepli - Via Borgogna





FLOOR	DESTINATION	GLA (SQM)
Second Basement	Storage	569
First Basement	Retail	1,412
Ground	Retail	110
Mezzanine	Retail	72
First	Retail	216

Business lease with a trade license of medium surface (already in place)

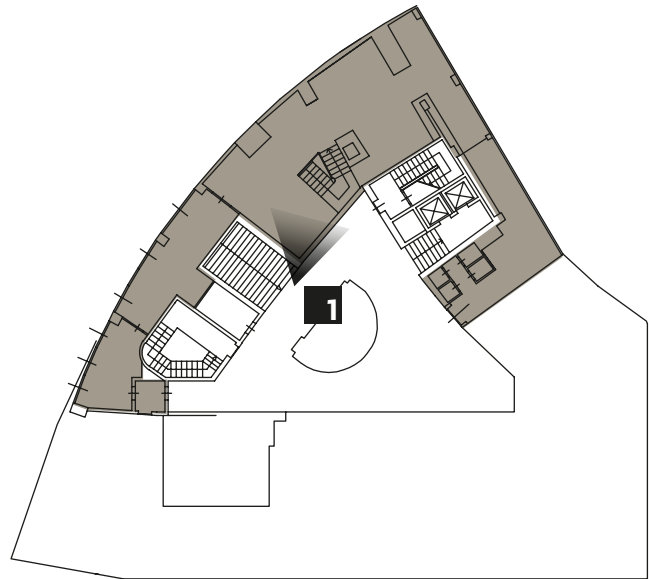
*Total Available Areas*  
**SQM**

2,379

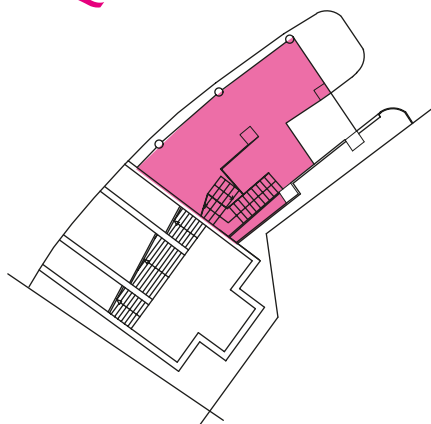


# CORSO VITTORIO EMANUELE

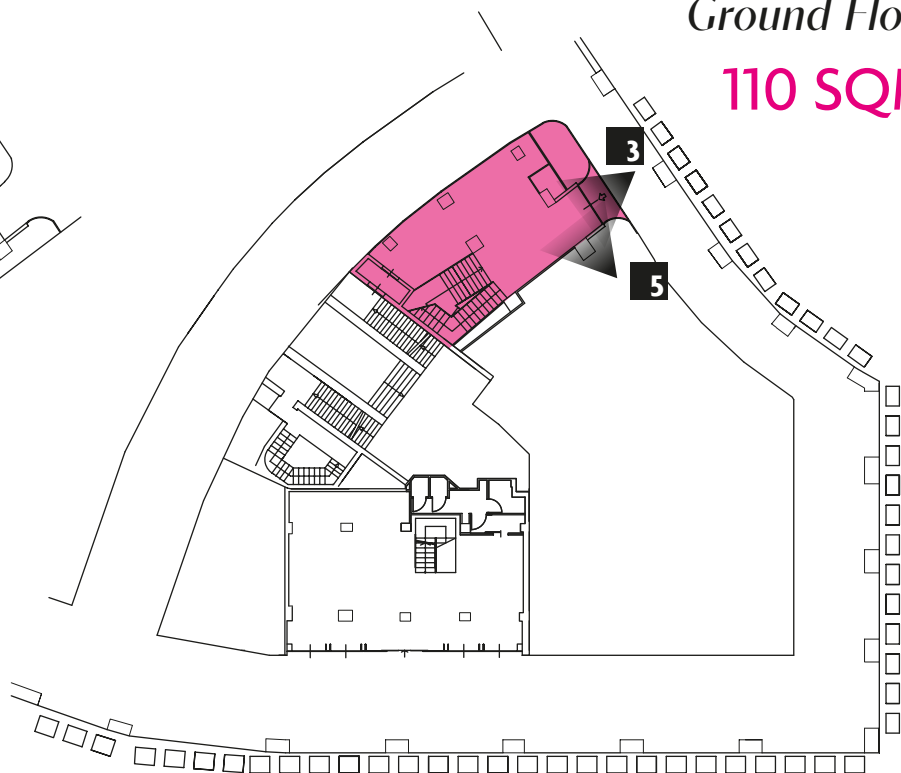
*First Floor*  
216 SQM



*Mezzanine Floor*  
72 SQM

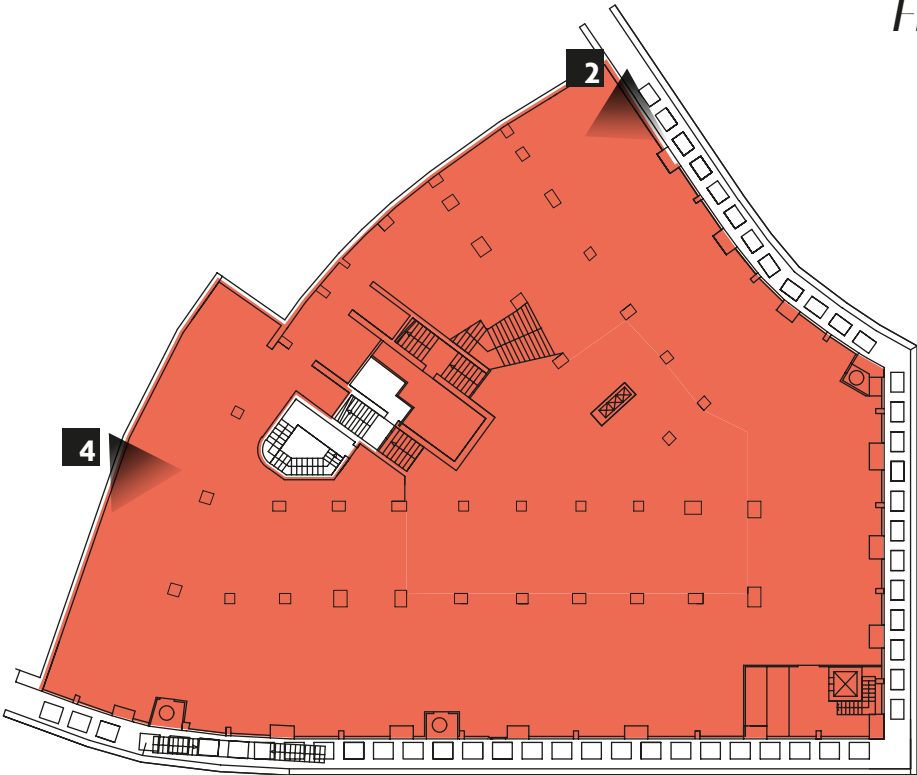


*Ground Floor*  
110 SQM



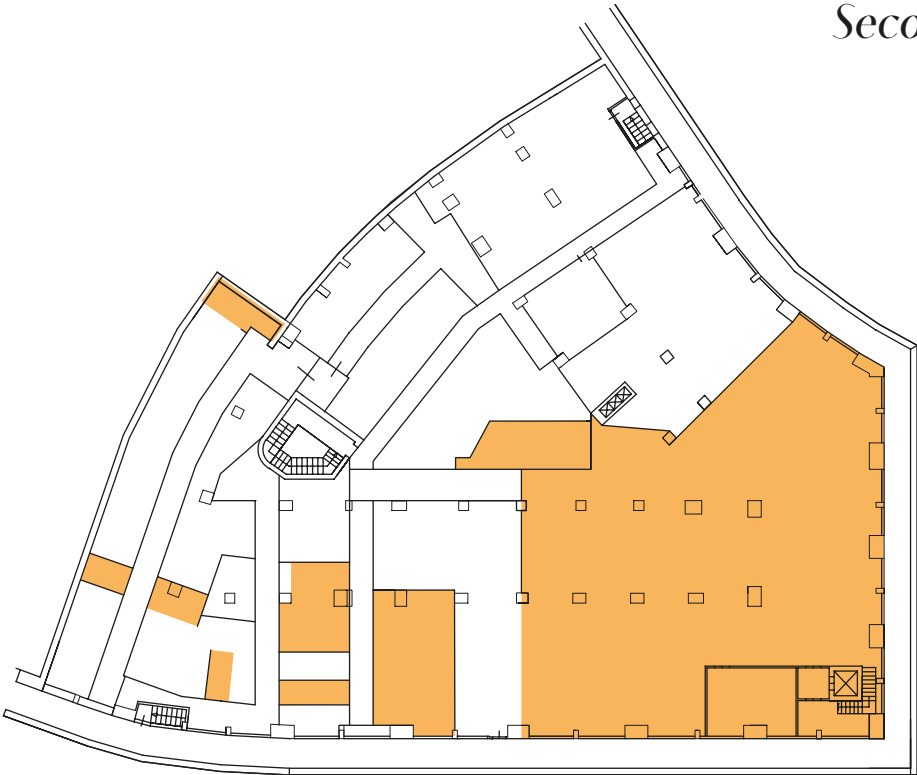
*First Basement Floor*

**1,412 SQM**



*Second Basement Floor*

**569 SQM**



MILANO

# AN ICONIC DESTINATION FOR EXCLUSIVE SHOPPERS WORLDWIDE



# WORLD



**STEP INSIDE YOUR  
FUTURE STORE.**

**SCAN TO EXPLORE**



# CORSO VITTORIO EMANUELE

*Managed by*

 **Investire**

*Exclusive agent*



Corso Matteotti 10 - 20121 Milano  
+39 02 67 16 02 01  
[highstreet.italy@colliers.com](mailto:highstreet.italy@colliers.com)  
[colliersitaly.it](http://colliersitaly.it)